

# ELECTRICAL

**NOCO**

## Solar Battery Chargers

Harness the Power of the Sun...  
Alternative 12 Volt Power Source

Is designed to charge or maintain a 12 volt battery in automobiles, SUVs, light trucks, motorcycles, boats, recreation vehicles, farm equipment, and any vehicle using a 12 volt battery.

- Works in all Weather Conditions
- Waterproof, Shock, and Rust Resistant
- Reverse Charge Protection
- Overcharge Protection

No.	Description	OUR PRICE
NOC ISC125	1.8W / 125mA	\$39.99
NOC ISC175	2.2W / 175mA	49.99
NOC ISC400	5.5W / 400mA	99.99
NOC ISC1000	15W / 1Amp	199.99
NOC ISCC1	Controller for 15 watt panels	45.99

**iMob**<sup>TM</sup>  
Solar Battery Chargers



**SEADOGLINE**

## Battery Box Strap and Brackets

Woven Polypropylene  
STD Pack 10

- No. SDG 4150921 – 38"
- No. SDG 4150941 – 54"

our price  
**\$4.19**  
38"

our price  
**\$4.25**  
54"



**MÖLLER**  
MARINE PRODUCTS

## Heavy Duty Battery Boxes 4D & 8D

- Will not corrode and resists chemicals and rust.
- Complies to industry requirements.

- No. MOE 42204 – 4D 23.63"L x 12.50"W x 14.63"H
- No. MOE 42209 – 8D 24.56"L x 14.75"W x 15.44"H

our price  
**\$109.99**  
8D

our price  
**\$89.99**  
4D



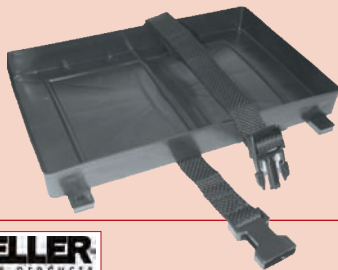
**Marine**

## Battery Holder w/Strap

With Poly Strap Hold Down. Unique new polypropylene hold down strap with positive locking quick disconnect buckle matched with a molded base.

- No. THM BH24P – 24/24M Battery
- No. THM BH27P – 27/27M Battery

our price  
**\$8.39**  
Your Choice



**NOCO**

## Noco Snap-Top™ Battery Boxes

Noco Snap-Top Battery Boxes are manufactured from injection molded polypropylene plastic that effectively collects electrolyte, allows ventilation and prevents accidental contact of underground battery terminals.

- Vent Caps
- Heavy Duty Handles
- Locking Tabs
- HM318 box has large dividers to fit various sizes up to 31 series



**MÖLLER**  
MARINE PRODUCTS

## Battery Trays

- No. MOE 42215 – Group 24
- No. MOE 42216 – Group 27/30/31

our price  
**\$14.99**  
Group 24

our price  
**\$16.99**  
Group 27/30/31



No.	Description	OUR PRICE
NOC HM300BK	Group 24	\$10.99
NOC HM327BK	Group 27	12.99
NOC HM318BK	Group 31	14.99

**BLUE SEA SYSTEMS**

## Screw Terminal Blade Fuse Block

our price  
**\$41.99**  
6 Circuit

our price  
**\$51.99**  
12 Circuit

- Clear insulating cover with label recess for small format Blue Sea Systems' labels
- Cover insulates all conductive parts, satisfying ABYC/USCG requirements
- Tin-plated copper buses and fuse clips give 30 Ampere rating per circuit
- Accepts ATO and ATC fast acting blade type fuses



- No. BSS 5025 – 6 Circuit With Ground
- No. BSS 5026 – 12 Circuit With Ground

## BLUE SEA SYSTEMS Glass Fuse Block System

AGC 6 circuit with ground

- Clear insulating cover with label recesses for standard Blue Sea Systems' labels
- Cover insulates all conductive parts, satisfying ABYC/USCG requirements and storing spare fuses
- Tin-plated copper buses and Beryllium copper fuse clips give full 30 Ampere rating per circuit
- Uses AGC (fast-acting), MDL (time-delay) and all other 3AG glass fuses

our price  
**\$34.99**



No. BSS 5015

## MARINCO ConnectPro Trolling Motor Plug & Receptacle

The new ConnectPro trolling motor plug and receptacle is a revolutionary new concept in trolling motor connections. The ConnectPro has superior electric current carrying capacity to eliminate problems that rob motors of power and reduce battery life. Feature a locking plug and receptacle with spring clamping connections which provide a secure electrical contact.

- Universal design for 2- or 3-wire configurations; 12, 24, 12/24, or 24/36 or 36 volt systems
- Watertight sealing cap

- No. MAR 12VCP - Set
- No. MAR 12VBP - Plug Only

our price  
**\$44.99**  
set

our price  
**\$19.99**  
plug only



**SEADOGLINE**

## Power Socket 12-Volt

our price  
**\$9.99**

- Stamped 304 stainless mounting plate
- Chrome brass socket and molded cap
- Ideal for additional power outlets

No. SDG 4260531



## SEADOGLINE Battery Terminal Covers

Injection-molded PV  
Sold in pairs.

No. SDG 4151001

