

SEATING



Fishing Chair

Features a six year warranty on the frame and a three year warranty on the upholstery.

- High Impact Plastic Frame
- Heavy Duty 28 oz marine vinyl
- UV Treated to resist mildew and fading
- Aluminum Hinges
- Swivel not included

No. WSS WD734PLS660 – Gray/Navy
 No. WSS WD734PLS664 – Gray/Charcoal
 No. WSS WD734PLS710 – White
 No. WSS WD734PLS662 – Sand/Brown



our price
\$48⁹⁹



High Back Seat

When a day of fishing leaves you exhausted, let it be from fighting fish and NOT from fighting your chair! Aluminum hinges, Less swivel. 21-34"H x 16" W x 15"D.

No. WSS WD588PLS660 – Grey/Navy
 No. WSS WD588PLS664 – Grey/Charcoal



our price
\$79⁹⁹



Single Bucket Seat

Rotationally molded of rugged, UV stabilized polyethylene and upholstered in high quality, marine grade vinyl to withstand harsh marine conditions. Molded-in 1/4-20 Nuts accept most marine hardware. Available in white only. OD: 24"D x 24"W x 20"H, ID: 16 1/2"D x 17 1/2"W x 15"H.

No. TOD U851546



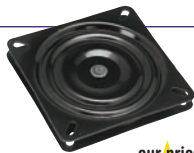
our price
\$369⁹⁹



Seat Swivel

Black powder coat. Swivels 360°. Fits most seats.

No. WSS WD10



our price
\$8⁹⁵



Mainstay Gas Powered Adjustable Pedestal w/Base

- Exceeds ABYC H-31 standards for class AP applications
- Power assisted adjustment from 14-1/2" to 19-1/2"
- Convenient front operating handle for height adjustment
- Stainless steel hardware, high strength aluminum, and engineering grade plastics used throughout.

No. SPM 1250150



our price
\$269⁹⁹



Designer Series Anodized Aluminum Padded Deck Chair

Lightweight, sturdy and very comfortable deck chair with one-piece canvas back and 24" high frame. 1" thick foam padded back and thigh support for added lumbar comfort. Double leg and front cross bar frame for stability, easy to stow. Beautifully sewn olefin woven fabric, tastefully appointed with embroidered code flag design and contrasting accent trim. 1" diameter, corrosive resistant, folding, anodized aluminum tube frame with poly tips. Varnished hardwood arms.

No. GAR 3502962



our price
\$84⁹⁹



Off-Shore Deck Chair

Built to be durable and weather-resistant. High density foam cushions are resilient and firm for maximum comfort. Easily fold for storing. Frames are constructed of sturdy, thick-wall, bright-dipped anodized aluminum. Seat dimensions: 30"H x 26"W x 24"D. Positive locking 1" anodized aluminum tubular frame.

No. WSS WD120AB



our price
\$149⁹⁹



Plastic-Frame Deluxe Lounge Seat

Seat length (reclined): 66". Fits most 16' to 19' boats. Base: 10"H x 13 1/2"W x 38"L. Seat: 27 1/2"H x 18"W.

No. WSS WD7071PW – White
 No. WSS WD7071PB – Light Blue
 No. WSS WD7071PGY – Grey



our price
\$219⁹⁹



Hunting/Fishing Fold-Down

With plastic seat frame and black steel hinges, less swivel.

- Upholstery color – Timber.
- Denier Cordura nylon.
- 17 1/2"H x 15"W x 14"D

No. WSS WD618PLS762



our price
\$79⁹⁹



ST2000-HD White 2000 Chair

- Standard seat with molded arms
- An industry favorite
- 24.5"D x 20"W x 16"H
- Cushion set, mounting plate (w/o swivel, slider & pedestal)

No. MOE ST2000HD



our price
\$139⁹⁹



Mariner Chair – With Weatherproof Sewn Cushions

- Anodized frame resists the elements
- Beautiful sewn cushions and arm rests
- Durable 1" double leg frame provides extra stability
- Marine grade vinyl
- Chair folds for stowage, dual locks prevent folding during use
- Overall width 26"; seat 19" wide 15.5" deep.

No. GAR 4810661



our price
\$199⁹⁹



Swing Back Seat 76 Quart with Cooler Base

- Double wall foam insulated base
- Molded polyethylene construction
- Use as a cooler or adapt to a live well
- Easy installation with molded mounting plates

Seat

- Heavy duty marine grade vinyl
- Mildew resistant thread
- Plastic frames
- Deep foam seat and back
- HD aluminum support slides fore and aft
- Seat back is cushioned on both sides
- 76 Qt capacity
- 18 1/2"D x 37"W x 34 1/2"H

No. MOE ST2200



our price
\$459⁹⁹



Swing Back Seat 50 Quart

- Double wall foam insulated base
- Molded polyethylene construction
- Use as a cooler or adapt to a live well
- Easy installation with molded mounting plates

Seat

- Heavy duty marine grade vinyl
- Mildew resistant thread
- Plastic frames
- Deep foam seat and back
- HD aluminum support slides fore and aft
- Seat back is cushioned on both sides

17" D x 30" W x 34-1/2" H

No. MOE ST3000



our price
\$449⁹⁹



Seafarer Pilot Package

- Positive Lock Chair Slide
- 360° locking swivel
- 18" seat height
- Two-piece cushions

Specifications:

- Base: 8" dia.; 7" hole pattern.
- Post: 2-3/8" dia.

No. SPM 1001415



our price
\$199⁹⁹